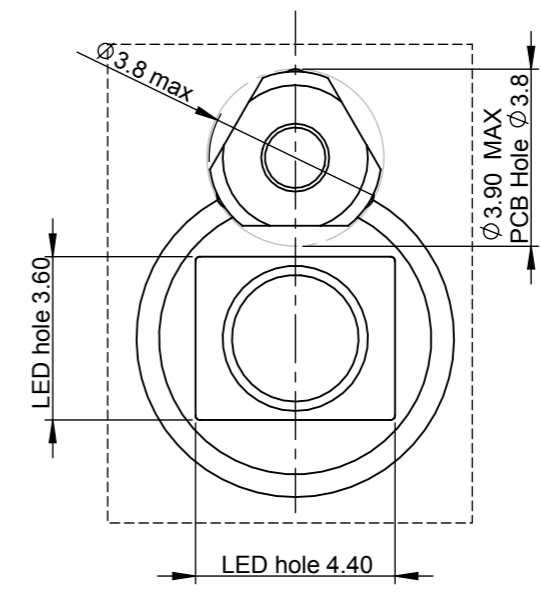
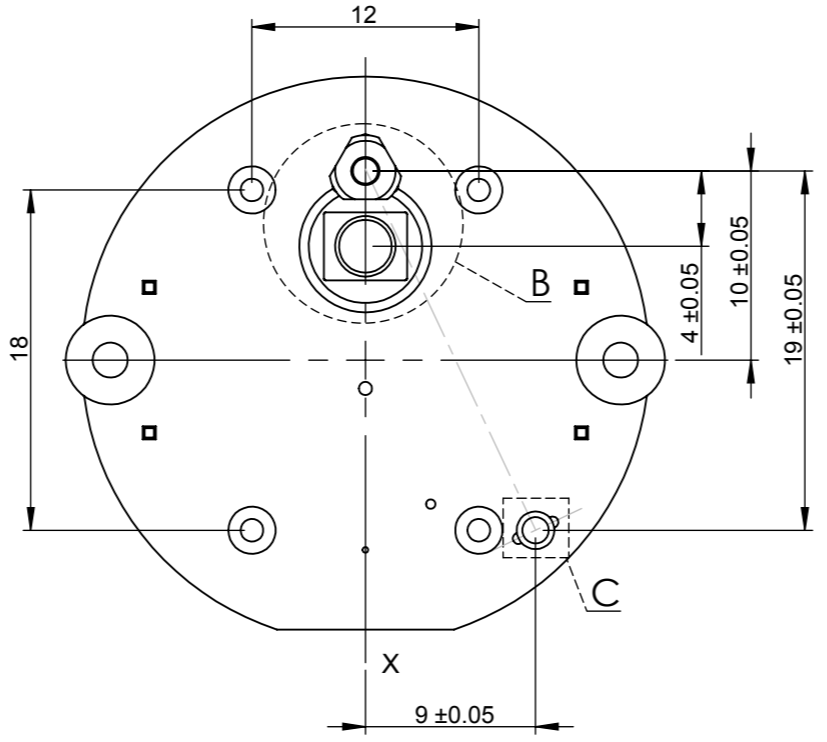
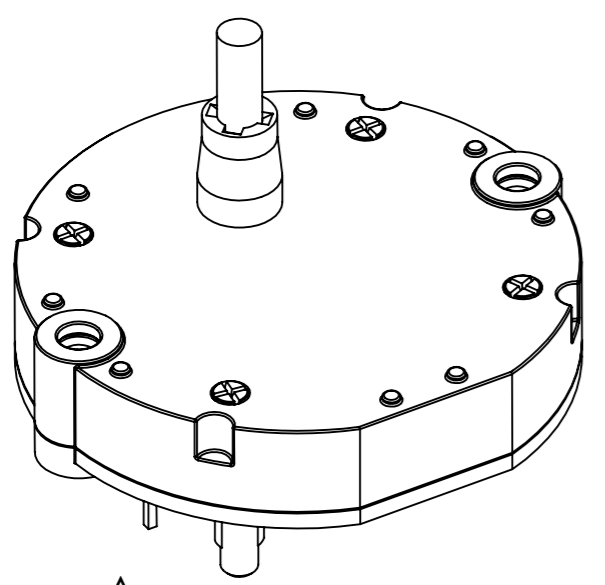
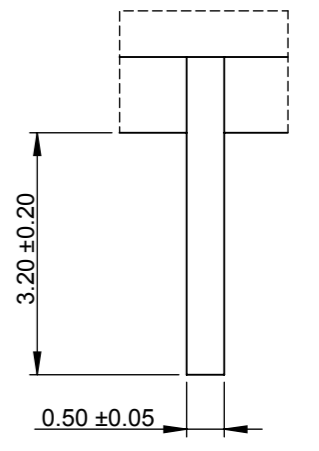


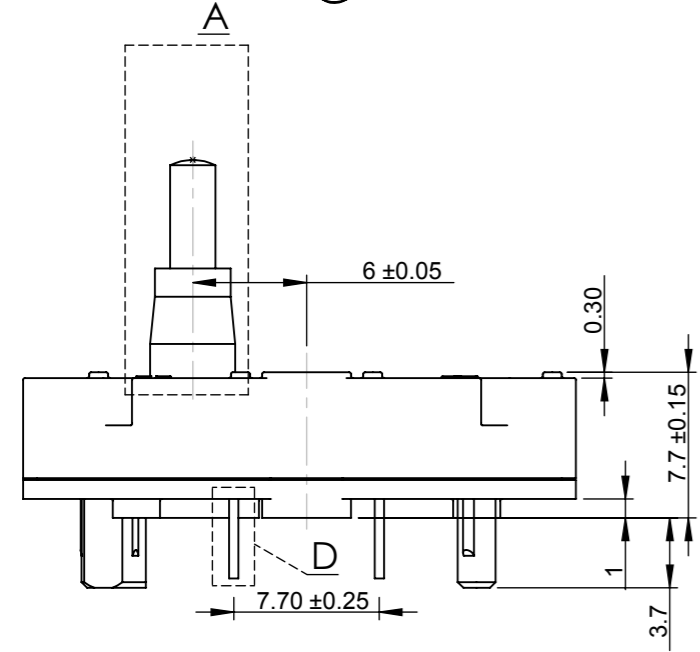
Radial Loading Mass(g)	Transparent Shaft C(mm)
1	0.02
2	0.04
3	0.05
4	0.06



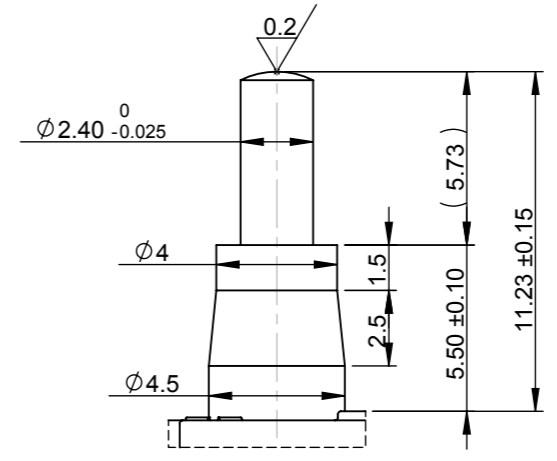
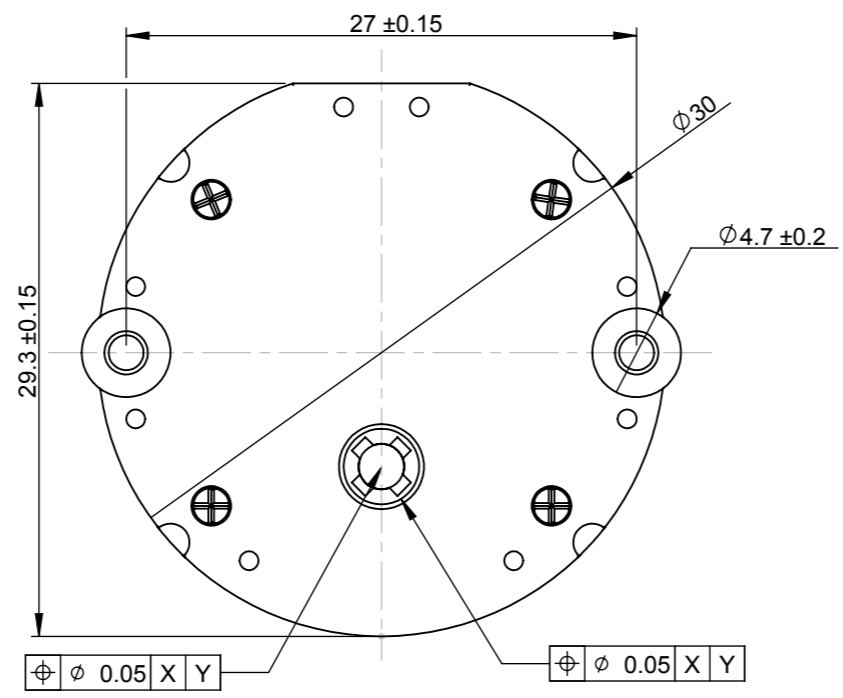
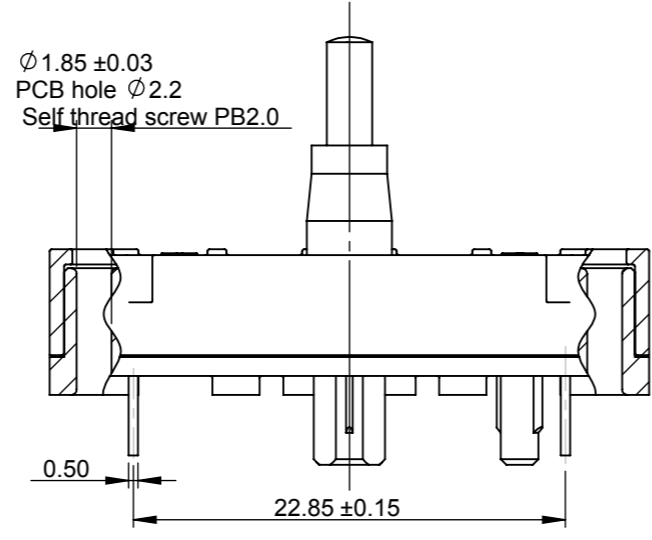
Partial View B  
Scale (6 : 1)



Partial View D  
Scale (10 : 1)



Partial View C  
Scale (10 : 1)



Partial View A  
Scale (4 : 1)

**SPECIFICATIONS:**

Housing:  
-Material:PC  
-Colour:Black

Shaft:  
-Material:Transparent PC  
-Axialforce(stake-on):100N max  
-Axial pull force:60N max  
-Radial force: 5N max  
-External Torque: 40mNm  
-Rotation Angle: 315° Max

El confaces  
-Material:Copper Alloy  
-Coil:el.resistance 280Ω  
Undim.Radio R0.05~R0.1  
Undim.Chamfered edges0.3×45°

Drawing No. VID23-01	Revision A0	Material	Date of Issue 2022.05.18
Product/Part Name Stepper Motor	Product/Part No. VID23-01	JDE No.	Size A3
Project Title VID23-01	Unit mm	Draw by	Approve by
		Tolerance unless specified Dimension in mm x.x = +/- 0.10    x.xx = +/- 0.03 Angle in degree x.x = +/- 1°    x.xx = +/- 0.5°	