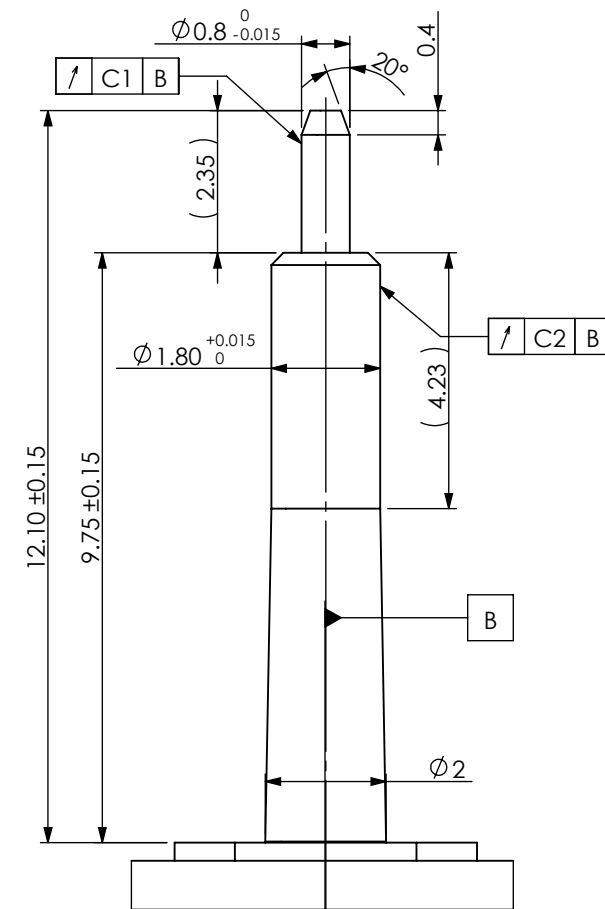
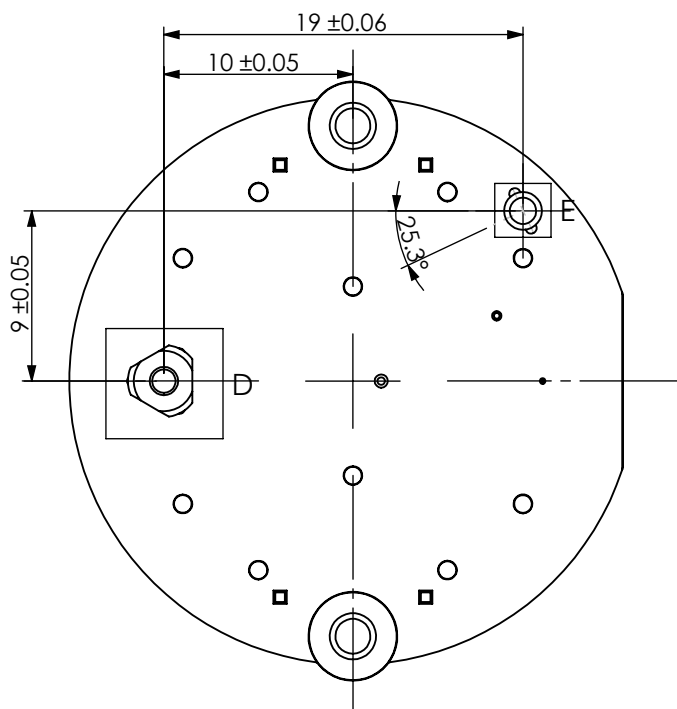
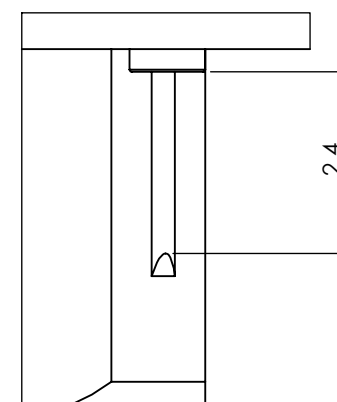
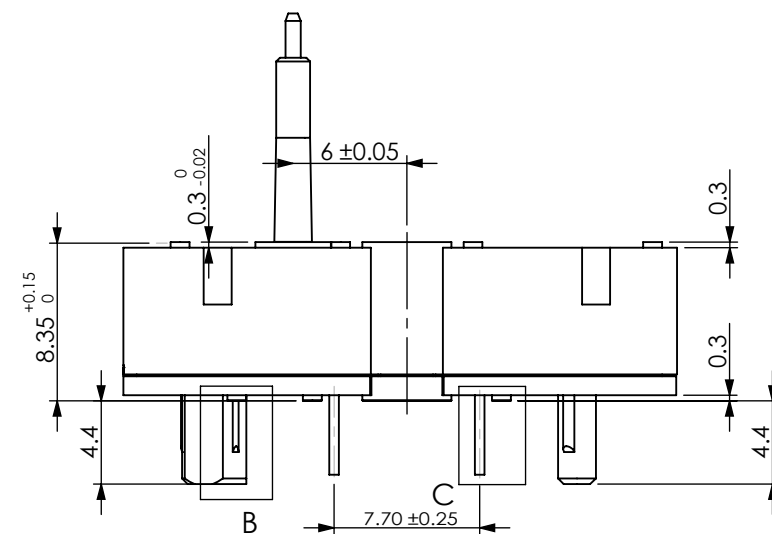
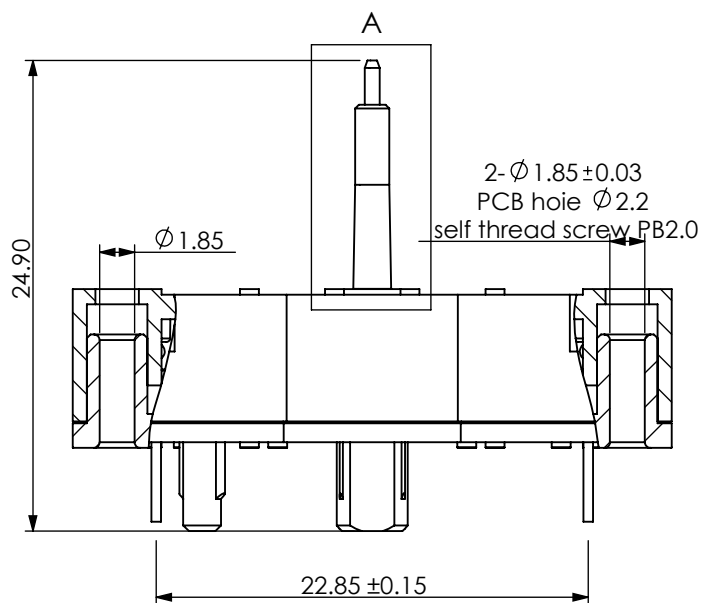


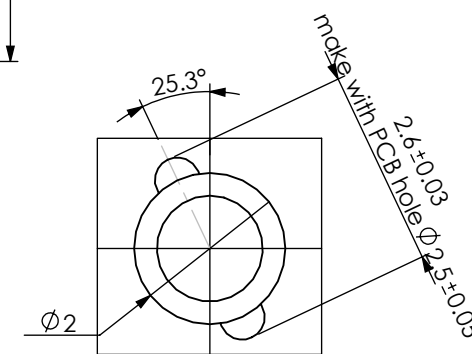
DETAIL D
SCALE 10 : 1



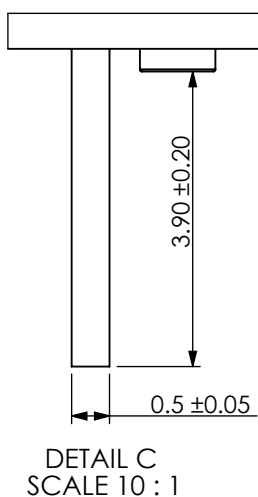
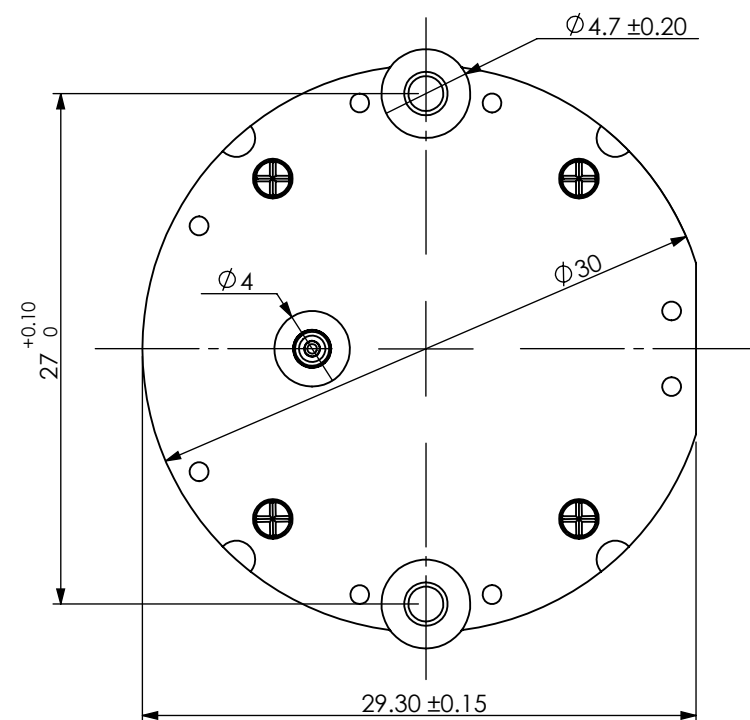
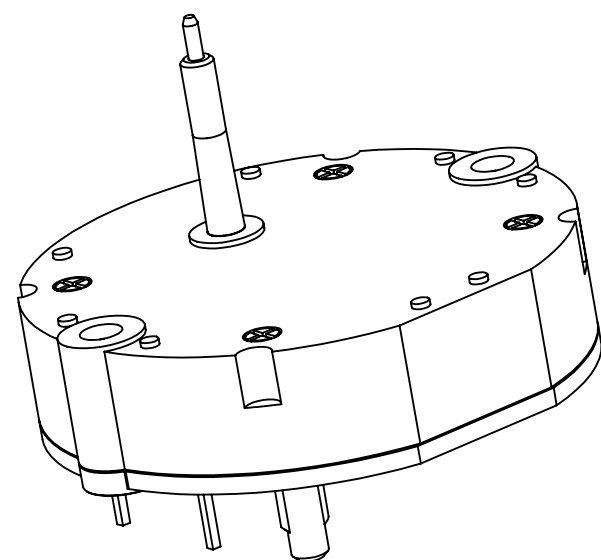
DETAIL A
SCALE 8 : 1



DETAIL B
SCALE 10 : 1



DETAIL E
SCALE 10 : 1



DETAIL C
SCALE 10 : 1

Swing (mm), speed of 66Hz	minute shaft	hour shaft
	C1	C2
Typ.	0.25	0.25
Max.	0.40	0.40

SPECIFICATIONS:

Housing:
-Material:PC
-Colour:Black
-Hold force clips:85N max

Minute Shaft:
-Material:Stainless Steel
-Axial force(stake-on):100N max
-Axial pull force:70N max
-Radial force:12N max

Hour Shaft:
-Material:PC
-Axial force(stake-on):60N max
-Axial pull force:60N max
-Radial force:5N max

EI confaces
-Material:Copper Alloy
-Coil:el.resistance 260Ω
Undim.Radio R0.05~0.10
Undim.Chamfered edges 0.30×45°

Drawing No. VID69-02	Revision A0	Material	Date of Issue 2022.05.18
Product/Part Name Clock Motor	Product/Part No. VID69-02	JDE No.	Size A3
Project Title VID69-02	Unit mm	Approve by	
		Tolerance unless specified Dimension in mm x.x = +/- 0.10 x.xx = +/- 0.03 Angle in degree x.x = +/- 1° x.xx = +/- 0.5°	