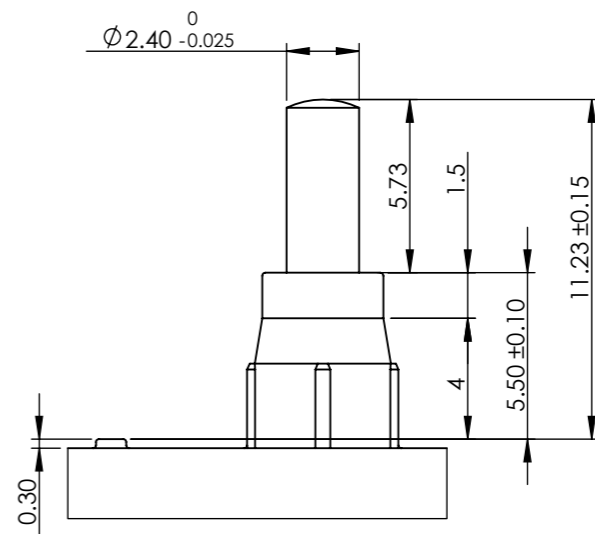


DETAIL C  
SCALE 6 : 1



DETAIL B  
比例 4 : 1

Radial Loading Mass (g)	transparent Shaft C (mm)
1	0.02
2	0.04
3	0.05
4	0.06

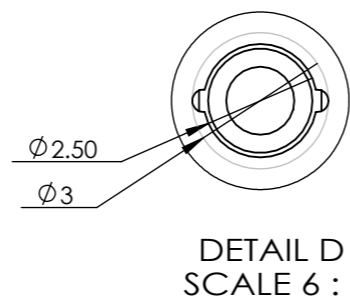
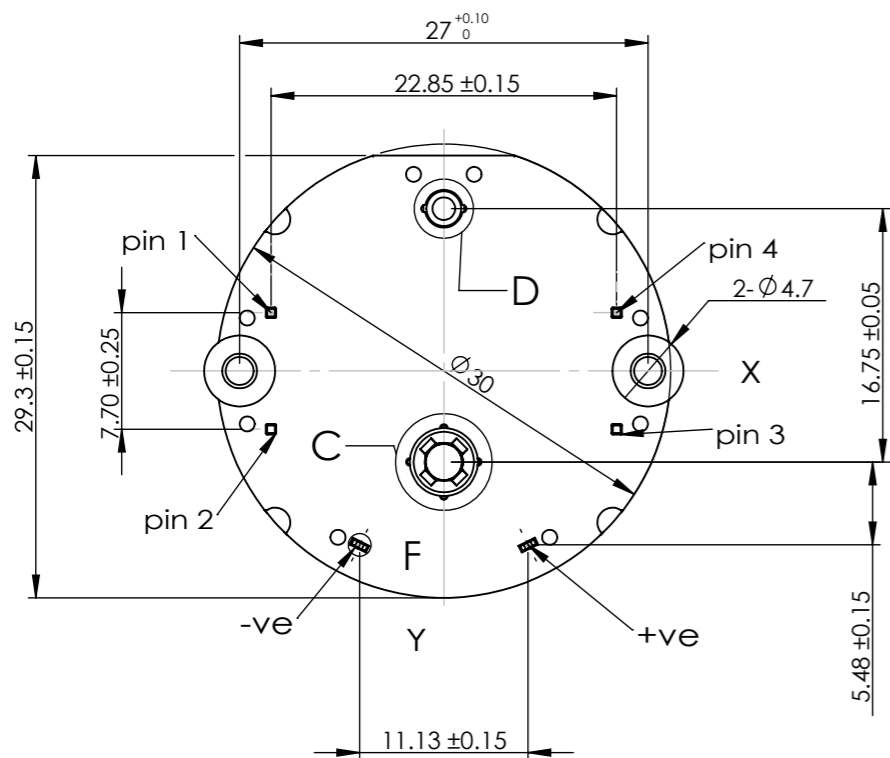
SPECIFICATIONS:

Housing:  
-Material:PC  
-Colour:Black

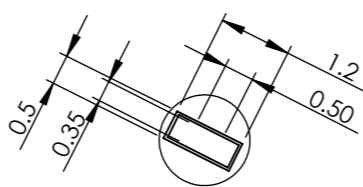
Shaft:  
-Material:transparent PC  
-Axial force(stake-on):100N max.  
-Axial pull force:60N max.  
-Radial force: 5N max  
-External Torque:40mNm max.  
-Rotation Angle:315° Max

El confaces  
-Material:Copper Alloy  
-Coil:el.resistance  $280 \pm 20\Omega$   
Undim. Radio R0.05-R0.1  
Undim. Chamfered edged  $0.3 \times 45^\circ$

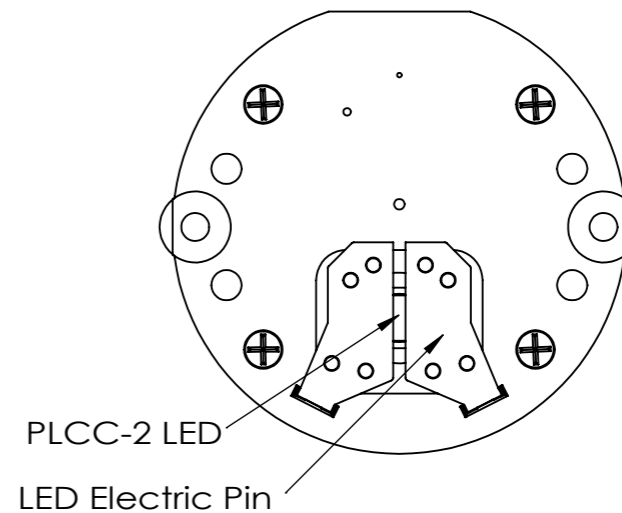
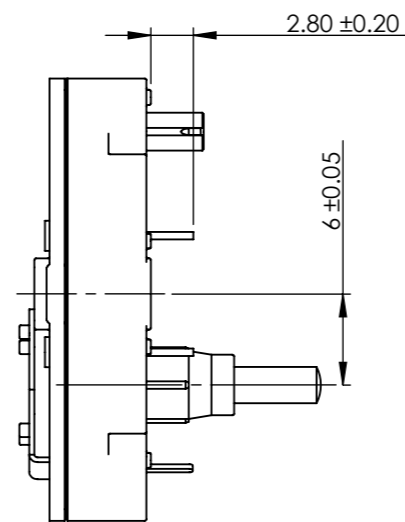
**General precaution:**  
Due to the lightpipe functions and LED cooling requirement, a special attention has to be taken to possible dust contamination insight the motor cavity for LED.



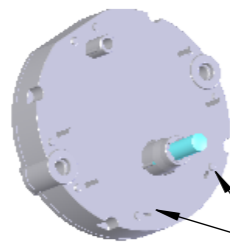
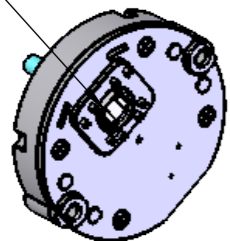
DETAIL D  
SCALE 6 : 1



DETAIL F  
DETAIL 8 : 1



PLCC-2 LED



LED Electric Pin

Part NO.	Drawing NO.	JDE NO.	LED NO.	Remark
VID2305SAW1	VID23-05-ASM-AW1-001	GM6V02305AW100B1	LWT6SG-V1AA-5K8L	OSRAM
VID2305SAR1	VID23-05-ASM-AR1-001	GM6V02305AR100B1	LRT67F-T2V2-1	OSRAM

Drawing No. VID23-05	Revision A0	Material	Date of Issue 2022.05.18
Product/Part Name Stepper Motor	Product/Part No. VID23-05	JDE No.	Size A3 Draw by
Project Title VID23-05	Unit mm	Approve by	
		Hong Kong VID Company Limited	
Tolerance unless specified Dimension in mm x.x = +/- 0.10    x.xx = +/- 0.03 Angle in degree x.x = +/- 1°    x.xx = +/- 0.5°			