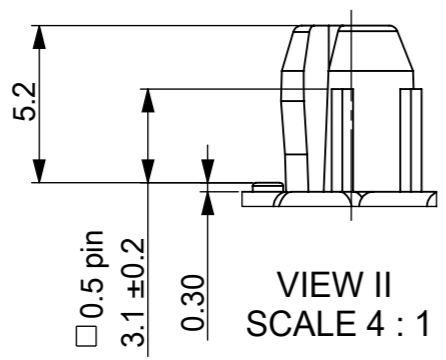
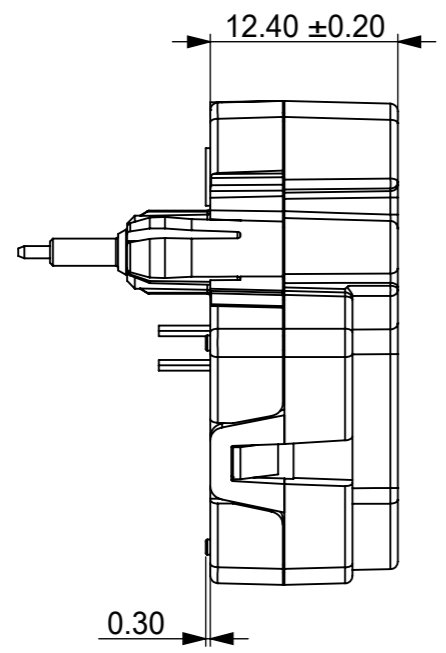
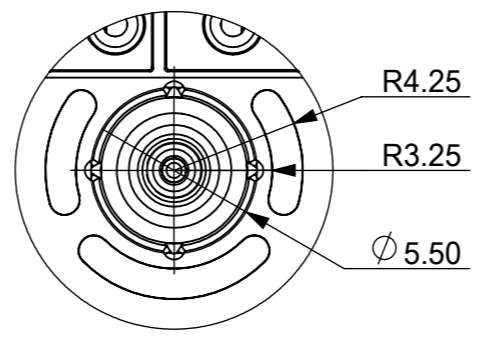
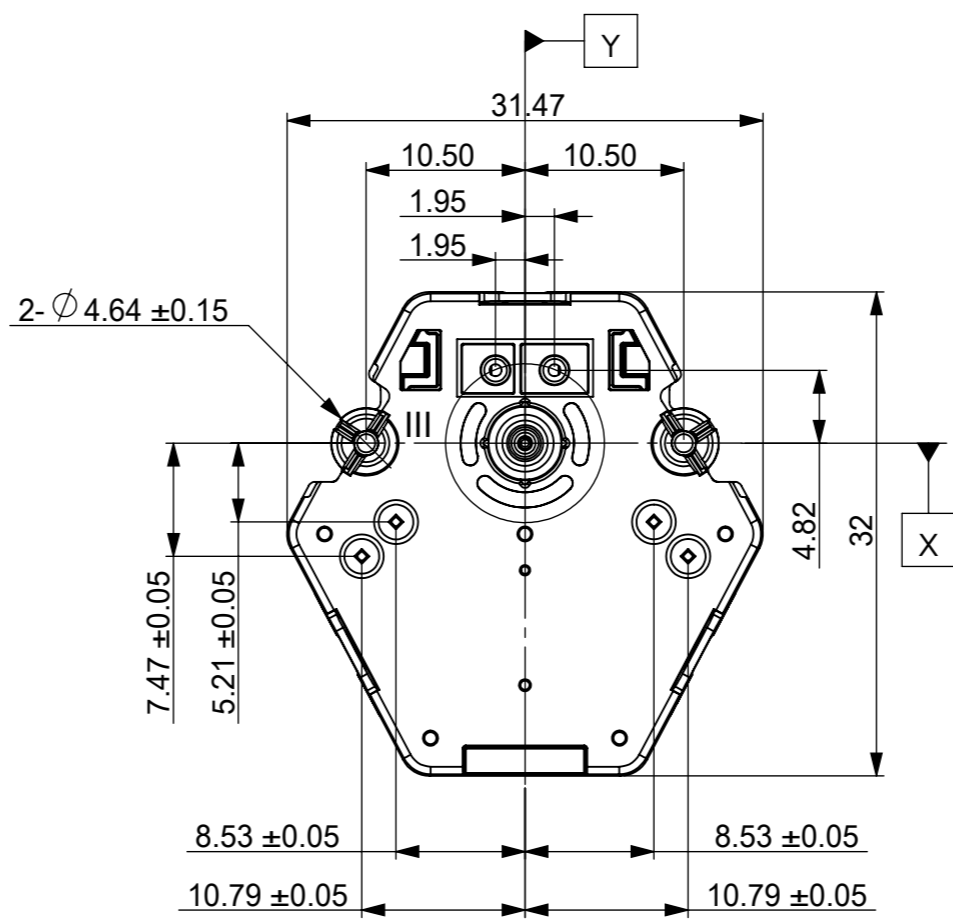
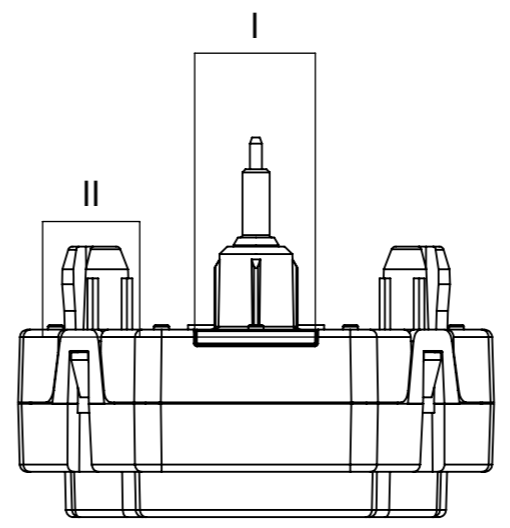


VIEW I
SCALE 4 : 1

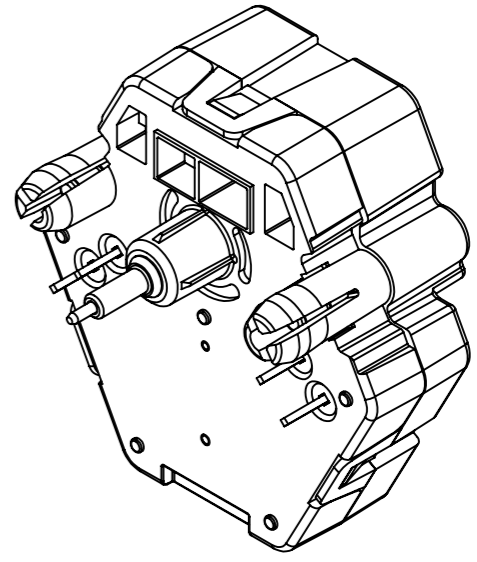


VIEW II
SCALE 4 : 1



VIEW III
SCALE 4 : 1

| Runout at 200Hz (mm) | minute shaft | hour shaft |
|----------------------|--------------|------------|
| | C1 | C2 |
| Typ. | 0.25 | 0.25 |
| Max. | 0.40 | 0.40 |



SPECIFICATIONS:

- Housing:**
 -Material:PC
 -Colour:Black
 -Hold force clips:85N max
- Minute Shaft:**
 -Material:Stainless Steel
 -Axialforce(stake-on):100N max
 -Axial pull force:70N max
 -Radial force:12N max
- Hour Shaft:**
 -Material:PC
 -Axialforce(stake-on):60N max
 -Axial pull force:60N max
 -Radial force:5N max
- Electric Properties :**
 - Electric pin : Tin plated CP wire

| | | | | | | | |
|-------------------|-------------|------------------|----------|------------|--------|----------------------------|-----------------|
| Drawing No. | VID30-05 | Revision | A0 | Material | | Date of Issue | 2022.5.18 |
| Product/Part Name | Clock Motor | Product/Part No. | VID30-05 | JDE No. | | Size | A3 |
| Project Title | VID30-05 | Unit | mm | Approve by | Martin | | |
| | | | | | | Tolerance unless specified | |
| | | | | | | Dimension in mm | |
| | | | | | | x.x = +/- 0.10 | x.xx = +/- 0.03 |
| | | | | | | Angle in degree | |
| | | | | | | x.x = +/- 1° | x.xx = +/- 0.5° |