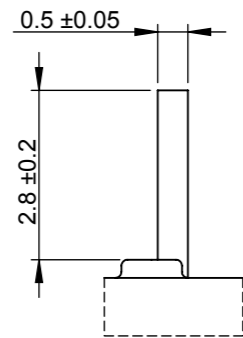
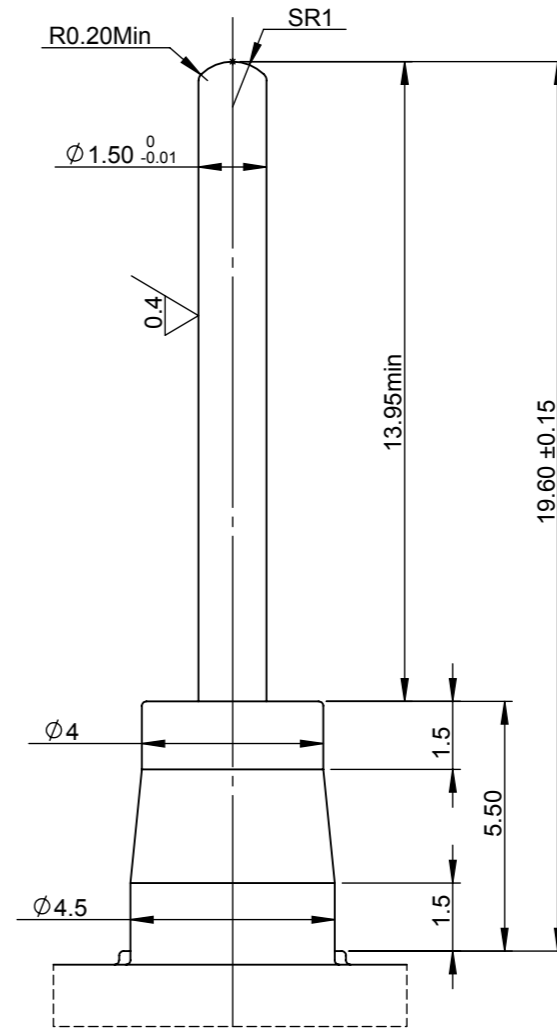
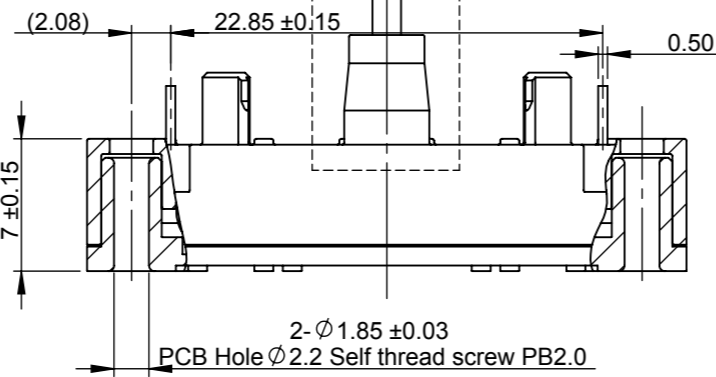
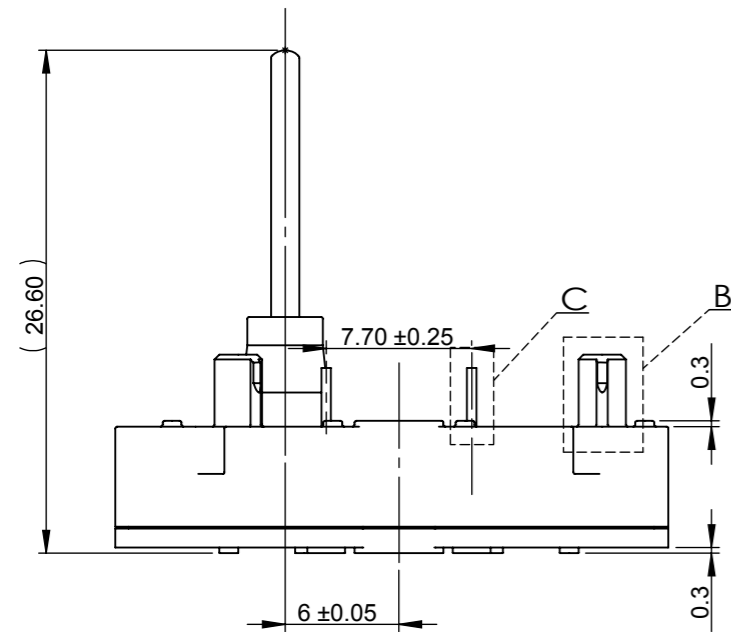
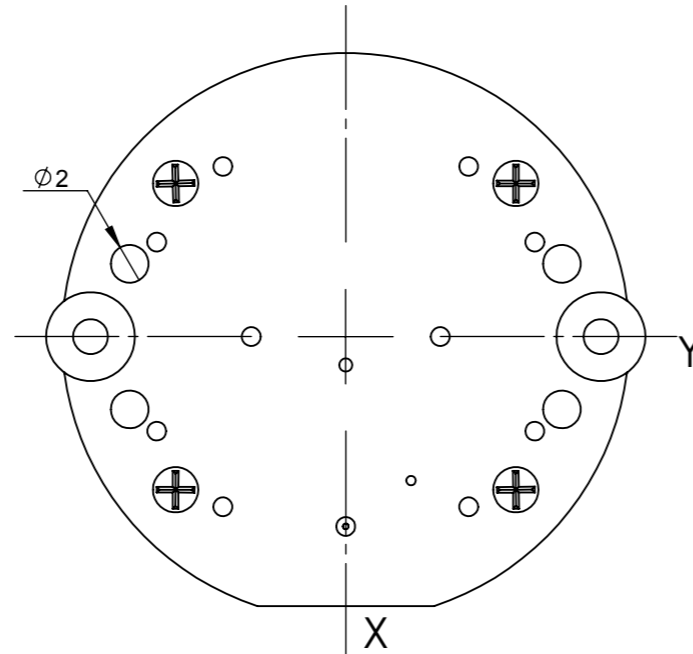


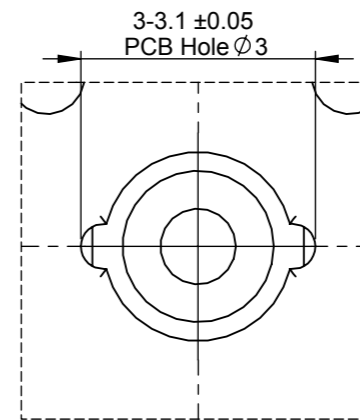
partial view B  
Scale 8:1



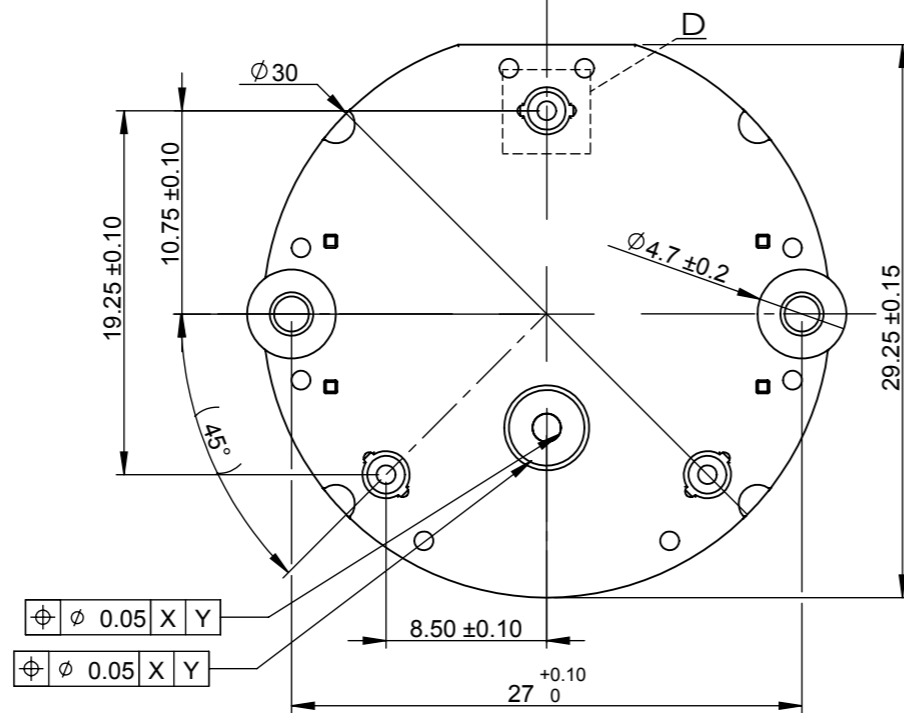
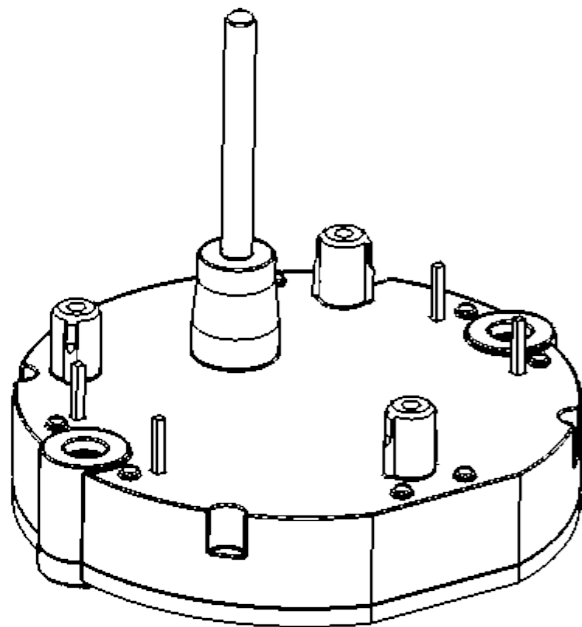
partial view C  
Scale 8:1



partial view A  
Scale 6:1



partial view D  
Scale 10:1



⊕ ⌀ 0.05 X Y  
⊕ ⌀ 0.05 X Y

**SPECIFICATIONS:**

Housing:  
-Material:PC  
-Colour:Black  
-Hold force clips:85N max

Shaft:  
-Material:Stainless Steel  
-Axialforce(stake-on):150N max.  
-Axial pull force:70N max.  
-Radial force:12N max.  
-External Torque: 40mNm Max  
-Rotation Angle:315° max.

EI contacts:  
-Material:Copper Alloy  
-Coil:el.resistance 280Ω  
Undim.Radio R0.05~R0.10  
Undim.chamfered edges 0.30×45°

Drawing No.	VID29-07	Revision	A0	Material		Date of Issue	2022.05.18
Product/Part Name	Stepper Motor	Product/Part No.	VID29-07	JDE No.		Size	A3
Project Title	VID29-07	Unit	mm	Approve by			
						Tolerance unless specified Dimension in mm x.x = +/- 0.10    x.xx = +/- 0.03 Angle in degree x.x = +/- 1°    x.xx = +/- 0.5°	