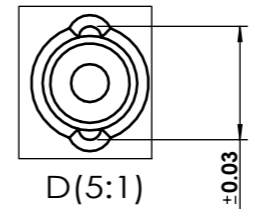
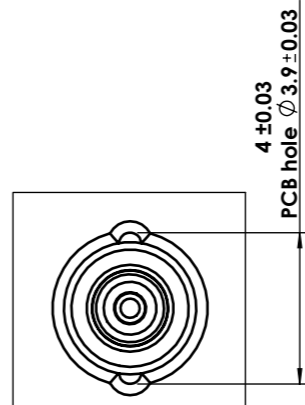
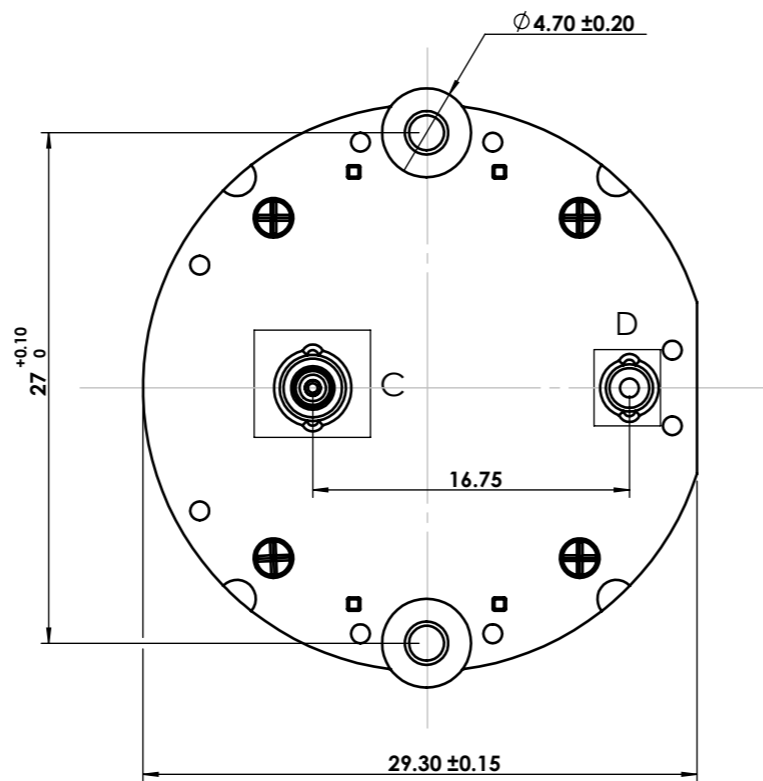
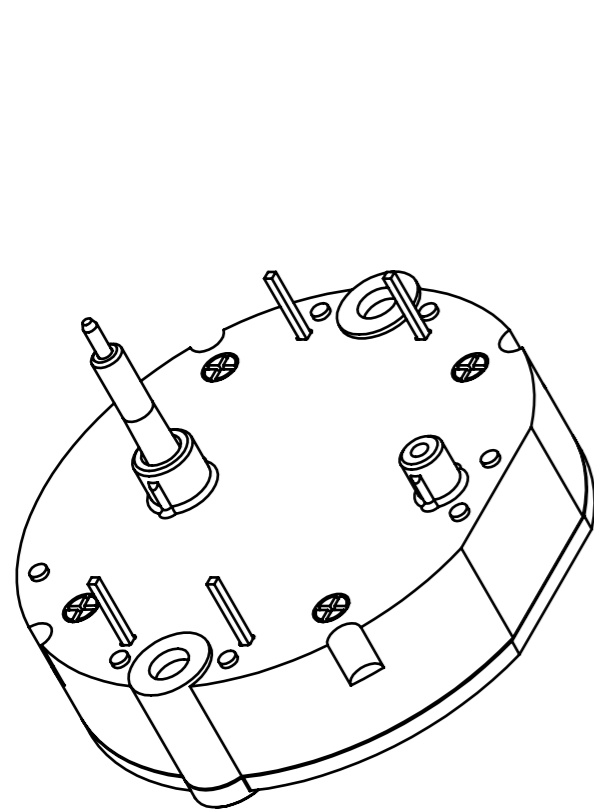
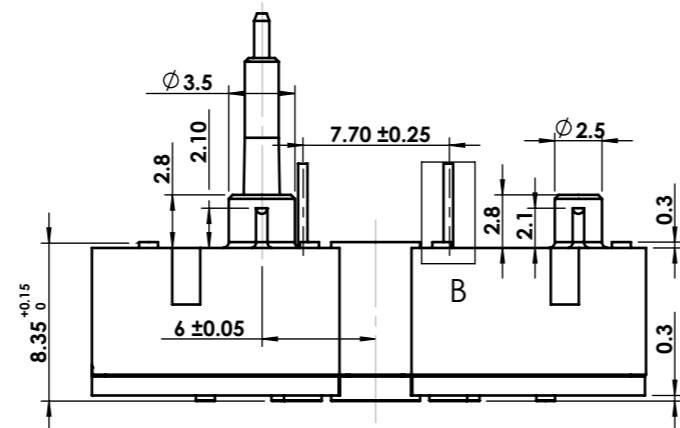
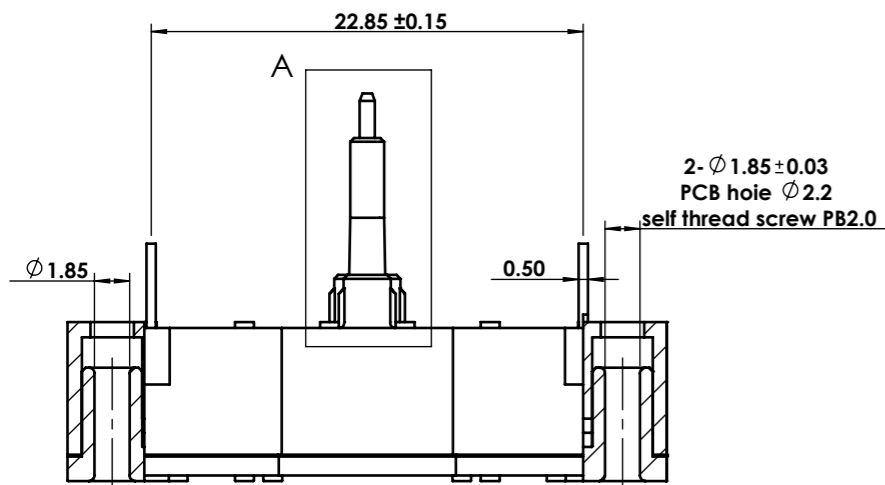


Swing(mm), speed of 66Hz	minute shaft	hour shaft
	C1	C2
Typ.	0.25	0.25
Max.	0.40	0.40



SPECIFICATIONS:

Housing:
 -Material:PC
 -Colour:Black
 -Hold force clips:85N max

Minitue Shaft:
 -Material:Stainless Steel
 -Axialforce(stake-on):100N max
 -Axial pull force:70N max
 -Radial force:12N max

Hour Shaft:
 -Material:PC
 -Axialforce(stake-on):60N max
 -Axial pull force:60N max
 -Radial force:5N max

El confaces
 -Material:Copper Alloy
 -Coil:el.resistance 260Ω
 Undim.Radio R0.05~0.10
 Undim.Chamfered edges 0.30×45°

Drawing No. VID69-05	Revision A0	Material	Date of Issue 2022.05.18
Product/Part Name Clock Motor	Product/Part No. VID69-05	JDE No.	Size A3
Project Title VID69-05	Unit mm	Approve by	
		Tolerance unless specified Dimension in mm x.x = +/- 0.10 x.xx = +/- 0.03 Angle in degree x.x = +/- 1° x.xx = +/- 0.5°	